



W-CAT5E/CMP/White UL

UTP PLENUM NETWORK CABLE



Unshielded Twisted Pairs - 4 Pairs, 24AWG

Category 5e Cable, according to UL 444 and CSA C22.2 No. 214 communication cable standard

Cable Construction:

Conductor: 24AWG (1/0.50mm) Pure Copper

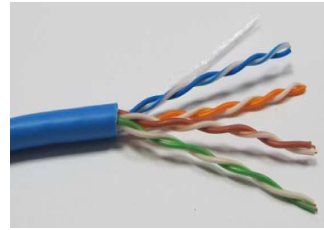
Insulation: HDPE 0.95mm

Nos of Twisted Pairs: 4 Pairs

Assembly: 4 Pairs of dielectric core shall be stranded in circular form, with Rip Cord.

Jacket: CMP Grade signifies cable that has passed stringent burn testing and is suitable for installation into Air Plenum spaces.

Overall Diameter: 0.195" (5.1±0.1 mm)



Cable Marking:

CMP mark, Cable Network Cable UTP CAT5 4 Pairs 24AWG Solid Pure Copper 0001FT *Or based on customers request

W-CAT5E/CMP/White UL cable intended for use within buildings in ducts or plenums or other spaces used for environmental air in accordance with Section 800.154(A) of the NEC. This cable exhibits a maximum peak optical density of 0.5, a maximum average optical density of 0.15, and a maximum flame spread distance of 5 ft, when tested per ANSI/NFPA 262, "Standard Method of Test for Flame Travel and Smoke of Wires and Cables for Use in Air-Handling Spaces."

Applications:

Suitable for installation into Air Plenum spaces.

Packing Length:

1. 100M, 305M Pull Box
2. 500FT, 1000FT Pull Box

Reference Standards:

1. TIA/EIA-568-B.2
2. RoHS Compliant
3. Certificate Number -on file
4. Report Reference -on file

Insulation Colors:

1. Orange, White/Orange
2. Blue, White/Blue
3. Green, White/Green
4. Brown, White/Brown

Electrical Characteristic:

Frequency (MHz)	Return loss (Min dB)	Attenuation Max (dB/100m)	NEXT (Min dB)
0.772	19.4	1.8	67.0
1	20.0	2.0	65.3
4	23.0	4.1	56.3
8	24.5	5.8	51.8
10	25.0	6.5	50.3
16	25.0	8.2	47.3
20	25.0	9.3	45.8
25	24.3	10.4	44.3
31.25	23.6	11.7	42.9
62.5	21.5	17.0	38.4
100	20.1	22.0	35.3

Electrical Characteristic:

Capacitance: Nom. 15.2 pf/ft

Velocity of Propagation: Nom. 67%DC(Loop)

Resistance of Conductor: Nom. 178.6Ω/km at 20

Operating Temperature: rated 60C or 75C

Characteristic impedance: Nom. 100±15Ω

DC(Loop) Resistance of Conductor: Nom. 178.6Ω/km at 20°C