

W-Cat5e/CCU

UTP NETWORK CABLE

Unshielded Twisted Pairs - 4 Pairs, 24AWG

Category 5e Cable, according to UL444 communication cable standard

Cable Construction:

Conductor: 24AWG (1/0.50mm) Pure Copper

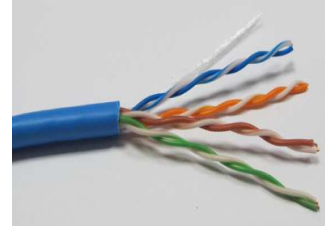
Insulation: HDPE 0.95mm

Nos of Twisted Pairs: 4 Pairs

Assembly: 4 Pairs of dielectric core shall be stranded in circular form, with Rip Cord.

Jacket: PVC, Flame Retardant or CM Grade.

Overall Diameter: 0.195" (5.1±0.1 mm)



Cable Marking:

HF Cable Network Cable UTP CAT5E 4 Pairs 24AWG Solid Pure Copper 0001FT

*Or based on customers request.

Applications:

Horizontal Wiring in LAN

Surveillance Cameras

Packing Length:

1. 100M, 305M Pull Box

2. 500FT, 1000FT Pull Box

Reference Standards:

1. TIA/EIA-568-B.2

2. RoHS Compliant

Insulation Colors:

1. Orange, White/Orange

2. Blue, White/Blue

3. Green, White/Green

4. Brown, White/Brown

Electrical Characteristic:

Frequency (MHz)	Return loss (Min dB)	Attenuation Max (dB/100m)	NEXT (Min dB)
0.772	19.4	1.8	67.0
1	20.0	2.0	65.3
4	23.0	4.1	56.3
8	24.5	5.8	51.8
10	25.0	6.5	50.3
16	25.0	8.2	47.3
20	25.0	9.3	45.8
25	24.3	10.4	44.3
31.25	23.6	11.7	42.9
62.5	21.5	17.0	38.4
100	20.1	22.0	35.3

Electrical Characteristic:

Capacitance: Nom. 15.2 pf/ft

Velocity of Propagation: Nom. 67%

Operating Temperature: -20°C-60°C

Characteristic impedance: Nom. 100±15Ω

DC(Loop) Resistance of Conductor: Nom. 178.6Ω/km at 20°C