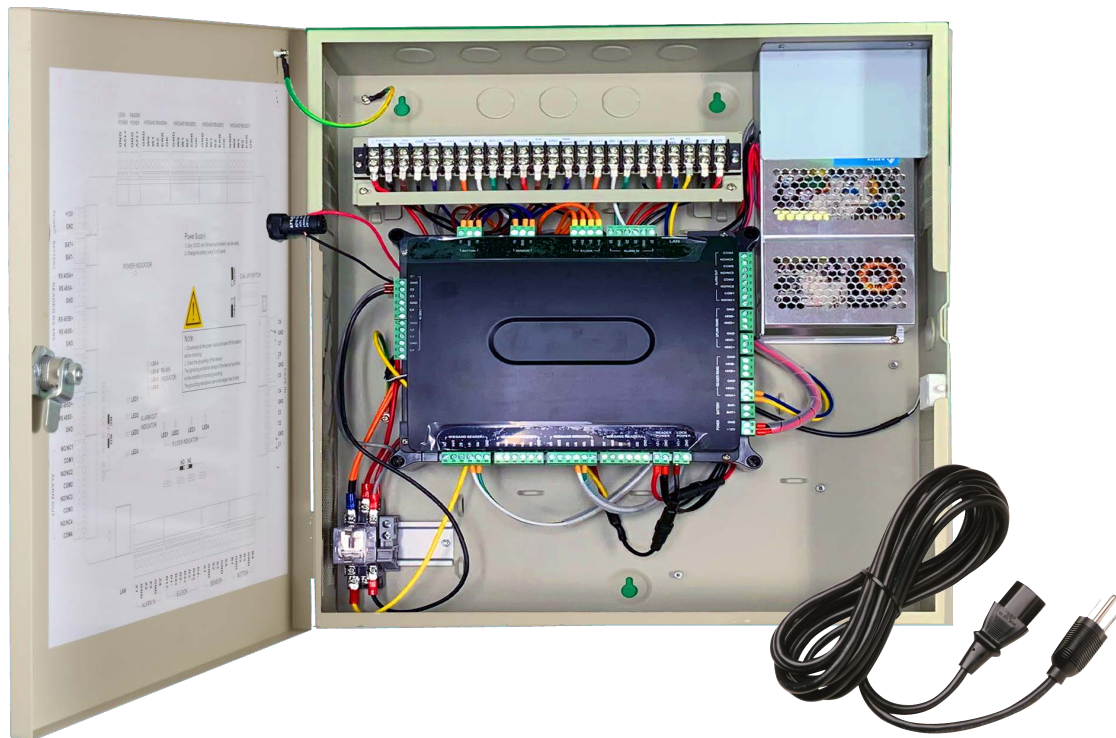


# AC604-DAC

## Four-door Access Controller



AC604-DAC access controller is designed with latest structure with TCP/IP and RS485 communication interface. The communication data is encrypted to improve the security of system. The controller also supports off line operation and is designed with tamper-proof switch.

### MAN FEATURES

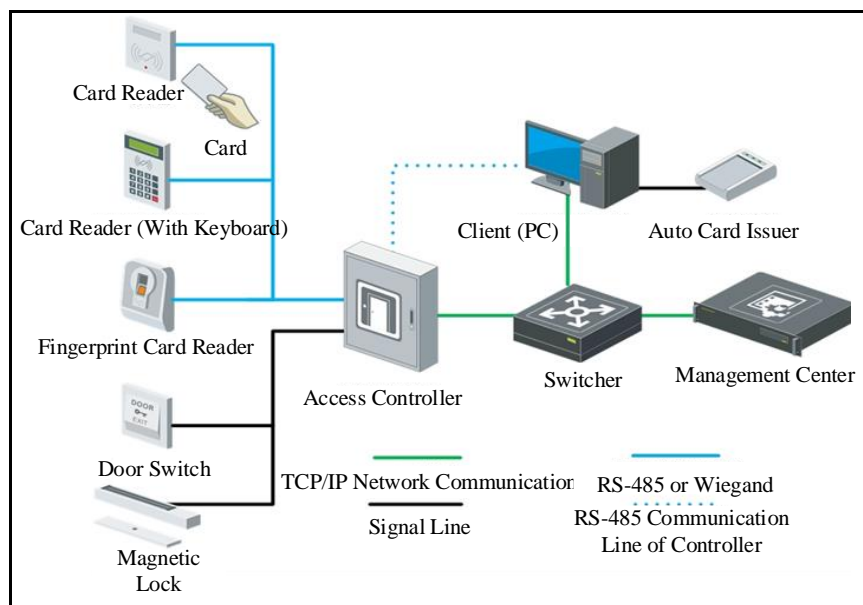
- 32-bit high-speed processor
- TCP/IP network communication, with self-adaptive network interface. The communication data is encrypted to ensure information security
- The recognition and storage of card number with maximum 20 digits
- Massive storage with 100,000 cards information and 300,000
- Supports multi-door interlocking function (AC602-DAC ,AC604-DAC), anti-passback function, multi-card function, first card function, super card and super password function
- Online upgrade function and online remote control of the doors
- Supports alarm event upload (including tamper-proof alarm, unsecured door alarm, forced entry alarm, delayed door alarm, duress card and code alarm, blacklist alarm and alarm for invalid card swiping attempts alarm)
- Short circuit attempts alarm and open circuit attempts alarm
- Supports zone alarm input
- Supports RS485 interface and Wiegand interface for accessing card reader. Wiegand interface supports W26/W34 and is seamlessly compatible with third-party card reader with Wiegand interface
- Supports various card types such as normal/ disabled/ blacklist/ patrol/ guest/ duress/ super card, etc.
- Various indicators to show different device status
- Supports time synchronization via NTP, manual or automatic method
- Supports standby battery

# AC604-DAC

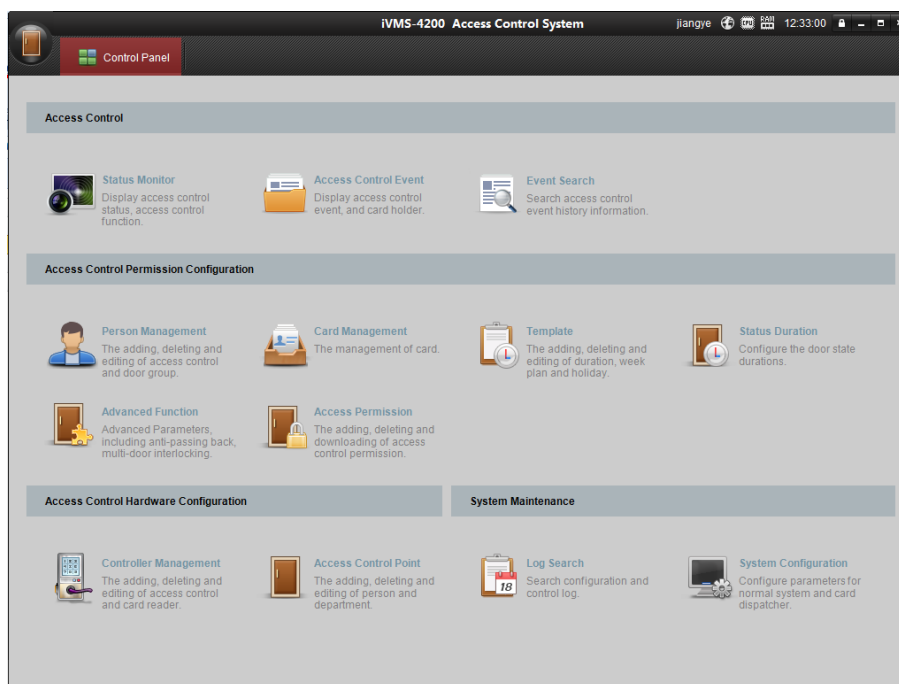
## Four-door Access Controller

- Watchdog for device running status detection
- Data can be permanently saved when the access controller is powered off

### TYPICAL APPLICATION



Topological Graph



Client Software Interface

# AC604-DAC

## Four-door Access Controller

Model	AC604-DAC		
Working Voltage	DC 12V/1A		
Power Dissipation (with Load)	≤100W		
Power Dissipation (Without Load)	≤4W		
Processor	32-bit		
Capacity	16M		
Uplink Communication Interface	TCP/IP, RS-485		
Downlink Communication Interface	RS-485, Wiegand (W26/W34)		
Storage	Cards Information: 100,000 Access Control Events: 300,000		
LED Indicator	Power Supply Status, Communication Status, Working Status		
Built-in Clock	Yes		
Accessible Card Reader	8 Card Readers (RS485 Interface), 4 Card Readers (Wiegand Interface)		
Input Interface	Alarm Input × 4, Door Sensor × 4, Exit Button × 4, Case Input × 8, Tamper Alarm × 1		
Output Interface	Lock Relay × 4, Alarm Relay × 4		
Working Temperature	-20°C to +65°C (-4°F to +149°F)		
Working Humidity	10% to 90% (Non-Condensing)		

# AC604-DAC

## Four-door Access Controller

<b>Model</b>	<b>AC604-DAC</b>	
<b>Dimensions (L×W×H)</b>	17.7in(L) x 15.7in(w) x 3.9in(H)	
<b>Certification</b>	CE, FCC	